



NEWINGTON  
LONDON

2 Bedrooms

Apartment

Located in London

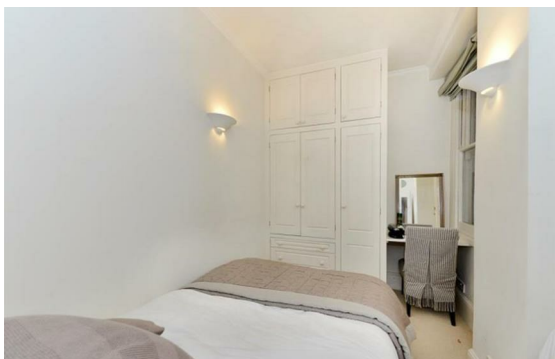
£800 Per Month



info@newingtonstates.com

<http://www.newingtonstates.com>

020 7724 2233



# NEWINGTON LONDON

60 Upper Montagu Street

London

W1H 1SN

020 7724 2233

[info@newingtonestates.com](mailto:info@newingtonestates.com)

Newington Estates are pleased to present this stunning two bedroom apartment set within this sought after block in the heart of St. John's Wood. The property comprises a reception/dining room leading onto a private space, separate fully fitted kitchen, two double bedrooms with built in wardrobes, and two bathrooms (one en suite).

The property is located on Marlborough Place just off the famous Abbey Road which is within close proximity of the shops, cafes & restaurants of St. John's Wood High Street, transport links of St. John's Wood Underground Station (Jubilee Line) & open spaces of Regent's Park. EPC RATING: C

## Energy Efficiency Rating: C

Agents Note: Whilst every care has been taken to prepare these particulars, they are for guidance purposes only. All measurements are approximate and are for general guidance purposes only and whilst every care has been taken to ensure their accuracy, they should not be relied upon and potential buyers/tenants are advised to recheck the measurements.

<http://www.newingtonestates.com>